

KOMATSU

PC360LCi-11

EU Stage IV Engine

intelligent
MACHINE CONTROL

HYDRAULIC EXCAVATOR

PRELIMINARY



PC360LCi

ENGINE POWER

202 kW / 271 HP @ 2.000 rpm

OPERATING WEIGHT

35.600 - 36.200 kg

BUCKET CAPACITY

max. 2,66 m³

Walk-Around

All the features and benefits of PC360LC-11... plus intelligent Machine Control

Powerful and Environmentally Friendly

- EU Stage IV engine
- Maximum productivity with intelligent Machine Control accuracy
- Adjustable idle shutdown
- Komatsu fuel-saving technology

First-Class Comfort

- Fully air-suspended operator station
- Low noise design: class-leading 71 dB(A)
- Low vibration levels
- Relaxed, productive operators



Image shows PC360LC-11 and may display optional equipment or specifications not available in your area.

PC360LC-11

Intelligent Machine Control

- NEW** • Innovative – Integrated – Intelligent
- NEW** • Automatic real time digging control
- NEW** • Fully factory integrated solution
- NEW** • Intelligent touch screen monitor

Safety First

- Komatsu SpaceCab™
- Improved monitoring system
- Neutral position detection system
- Safe access, easy maintenance

Quality You Can Rely On

- Komatsu-quality components
- Extensive dealer support network
- Reliable and efficient
- Rugged design

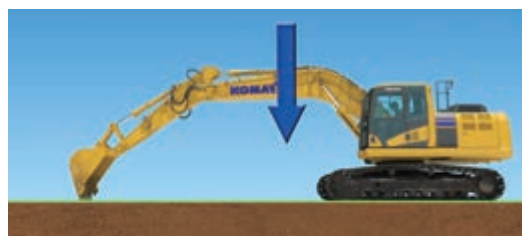
KOMTRAX™

- Komatsu Wireless Monitoring System
- 3G mobile communications
- Integrated communication antenna
- Increased operational data and fuel savings
- Machine control working data



Auto grade assist

With the auto grade assist function, the operator moves the arm, the boom adjusts the bucket height automatically, tracing the target surface and minimizing digging too deep. This allows the operator to perform rough digging without worrying about the design surface, and to perform fine digging by operating the arm lever only. The working range is extended by holding the lever to move the boom downward.




Auto stop control

During boom or bucket operation, the work equipment automatically stops when the bucket edge reaches the design surface, thus minimizing damage to the design surface.



Minimum distance control

The intelligent Machine Control excavator controls the bucket by automatically selecting the point on the bucket closest to the target surface. Should the machine not be facing a sloped surface at a right angle, it will still follow the target surface and minimize digging below it.



Complimentary maintenance program for customers

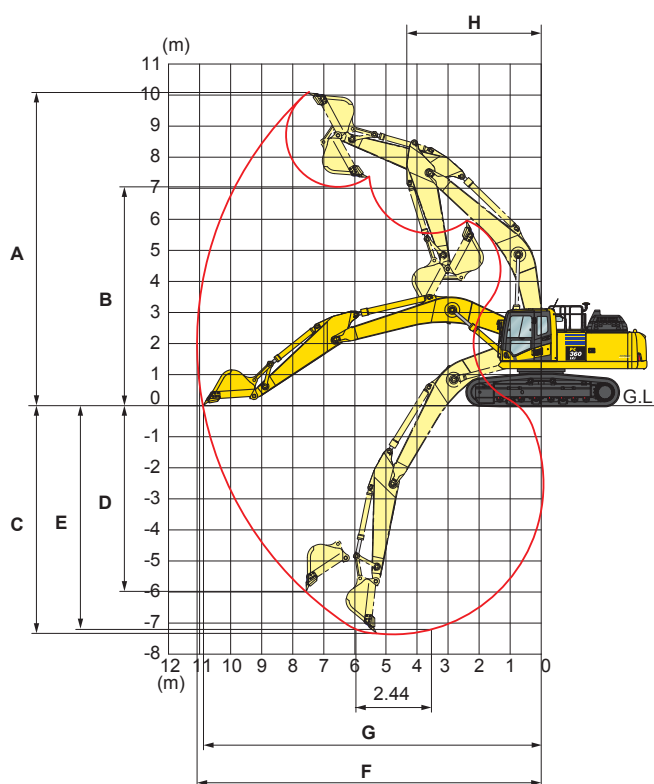
ENGINE

Model	Komatsu SAA6D114E-6
Type	Common rail direct injection, water-cooled, emissionised, turbocharged, after-cooled diesel
Engine power	
at rated engine speed	1.950 rpm
ISO 14396	202 kW/271 HP
ISO 9249 (net engine power)	192 kW/257 HP
No. of cylinders	6
Bore × stroke	114 × 144,5 mm
Displacement	8,85 l

HYDRAULIC SYSTEM

Type	HydraMind. Closed-centre system with load sensing and pressure compensation valves
Main pump	2 variable displacement piston pumps supplying boom, arm, bucket, swing and travel circuits
Maximum pump flow	2 × 267,5 l/min
Relief valve settings	
Implement	380 kg/cm ²
Travel	380 kg/cm ²
Swing	295 kg/cm ²
Pilot circuit	33 kg/cm ²

WORKING RANGE



UNDERCARRIAGE

Construction	X-frame centre section with box section track frames
Track assembly	
Type	Fully sealed
Shoes (each side)	48
Tension	Combined spring and hydraulic unit
Rollers	
Track rollers (each side)	8
Carrier rollers (each side)	2

ENVIRONMENT

Engine emissions	Fully complies with EU Stage IV exhaust emission regulations
Noise levels	
LwA external	104 dB(A) (2000/14/EC Stage II)
LpA operator ear	71 dB(A) (ISO 6396 dynamic test)
Vibration levels (EN 12096:1997)*	
Hand/arm	≤ 2,5 m/s ² (uncertainty K = 0,37 m/s ²)
Body	≤ 0,5 m/s ² (uncertainty K = 0,17 m/s ²)

* For the purpose of risk assessment under directive 2002/44/EC, please refer to ISO/TR 25398:2006.

ARM LENGTH

	3,2 m
A Max. digging height	10.210 mm
B Max. dumping height	7.110 mm
C Max. digging depth	7.280 mm
D Max. vertical wall digging depth	6.480 mm
E Max. digging depth of cut for 2,44 m level	7.180 mm
F Max. digging reach	11.100 mm
G Max. digging reach at ground level	10.920 mm
H Min. swing radius	4.310 mm